

Our community. Our stories.



# The Rose

## 2024



## Acknowledgement of Country

We would like to acknowledge the Traditional Custodians of this Country, the Cammeraygal people. We pay respects to Elders past, present and future.

On this land, the Cammeraygal people taught their children and shared knowledge and culture. Through the Cammeraygal people's example, we seek to do the same for our children on this land.

We thank the Cammeraygal people for their stewardship of this land.

On these ancestral lands, we also acknowledge our God and heavenly Father who made the heavens and the earth, and to whom we are responsible for the current stewardship of this land that has been entrusted to us.

This artwork by Gamilaroi artist Emma Hicks is a digital design that celebrates the Cammeraygal lands that Roseville College stands on. It includes both Middle Harbour and Turrumburra (Lane Cove River) waterways in the design, as well as a diversity of the beautiful flora and fauna native to this area.





## Welcome

***Let the peace of Christ rule in your hearts, since as members of one body you were called to peace. And be thankful.***

Colossians 3:12-17

**Deb Magill**  
Principal



There is something beautifully complimentary about what we celebrate in the pages of this edition of *The Rose*.

As we share the news of this year, you may notice how future focused so much of our work is; equipping and enabling our girls to lead, serve, learn and impact. Yet also proudly threaded through, is the account of a community that has stood the test of time; a story that right from the first year of existence, laid the foundation for what still matters... you. At Roseville College, the past and the present are not at odds, they exist and are celebrated because of the other. And that is the purpose of this publication.

In this edition, we celebrate some significant milestones; the opening of our Preparatory School (page 20), the launch of our new sport uniform (page 24) and the inaugural Bee School program in partnership with Guerlain (page 4).

And uniting us across generations, we highlight some wonderful traditions. For 30 years we have heard the cry of 'Row, Row Roseville', as decades of Roseville rowers have pulled in unison across the water (page 22). Creative and Performing Arts have always brought our community together, and many will remember for life the memories forged on the stage while at school. This year, our Senior School musical was *The Wizard of Oz*. But this is not the first time, we also look back to when it was last performed here in 1993 (page 46).

The impact of Roseville College goes well beyond our girls. This place has impacted, challenged, grown, supported and changed me. After 14 years at Roseville and eight as Principal, I am preparing for a change in season as I take up a new role in 2025. While excited about new opportunities and challenges, I am truly sad at the thought of leaving these girls, our staff and you, our broader Roseville community.

I will always be thankful to have been part of this very special place called Roseville College.

As I finish, a short note of thanks; I am proud of this publication and truly grateful to our team who has sought to understand and share the story of who we are, past, present and future, so thoughtfully. I look forward to receiving future editions of *The Rose* in the post.



## Belonging

4

### The Buzz of Belonging

We often refer to Roseville's community as our biggest strength. At its heart, community fosters connection and builds a sense of belonging for our students, parents, alumni and staff alike

22

### The Rowing Shed

Commemorating 30 years of rowing excellence. The keys that define the program endure – tradition, passion, inclusion and unwavering community support

40

### From Roseville to the World Stage with Bardot

"Roseville wasn't just a school, it was a sanctuary, filled with laughter, camaraderie and endless possibilities."

*Belinda Chapple-Landin  
(Class of 1992)*

#### ON THE COVER

Fiona Zhou and Isla Crichton from Year 4 in the garden



## Excellence

### Learning

- 31 *Cambridge Success*
- 31 *PhD Congratulations*
- 32 *NSW Young Scientist Award*
- 50 *Creative Writing*

### Debating

- 38 *Archdale Shield Victory*
- 39 *JA Thompson History Debating Champions*

### Creative and Performing Arts

- 44 *Wizard of Oz*
- 48 *Art Express*
- 49 *Young Archies*

### Service

- 54 *Everyday service culture*

## Community

### 8 A Sense of 'Us'

*Ms Deb Magill reflects*

### Leadership

- 12 *Prefects – 2024 Karat Magic*
- 14 *Junior School Leadership – Everyone has a role*
- 16 *School Captain 2024*

### 20 Preparatory School

### 28 Sports Uniform Update

### 36 Campus Update

*Sport and Wellbeing Centre*

### 56 Mother Daughter Q&A

*Michelle Chase (nee Dale) (1994) and daughters*

### 62 In Memory

*Dr Donna Gibbs (Mrs Lucy) (Teacher 1966–1990)*

### 63 Thank you

## Alumni

### Profiles

- 17 *Wendy Johnson nee Porteous (1960)*
- 18 *Anne Haberman nee Waldram (1977)*
- 19 *Hayley Wilson (Class of 2011)*
- 19 *Zoe King (2016)*
- 30 *Gillian Bariol nee Nisbet (1983)*
- 32 *Isabelle Fischer (2023)*
- 34 *Emily Brown (2015)*
- 44 *Felicity Cribb (2022)*
- 48 *Isobel Edmonds (2023)*
- 52 *Carly Hall nee Jenkins (2002)*
- 55 *Bronwyn Brown (Mrs Robards) (Teacher 1978–1994)*
- 55 *Julie Harvey (1972)*
- 55 *Robyn Twigg OAM nee Lothian (1973)*

### 46 Wizard of Oz 1993

### Alumni Events

- 35 *Alumni Careers sessions*
- 57 *Save the date*
- 58 *Roseville Golf Day*
- 59 *Reunions*



Inspiring our students to come together and take action today, for a better tomorrow.





## The Buzz of Belonging

Roseville Students learning  
to make a difference.

**W**e often refer to Roseville's community as our biggest strength. At its heart, community fosters connection and builds a sense of belonging for our students, parents, alumni and staff alike. Much like the harmony demonstrated in a hive, bees are renowned for their strong community spirit, culture of cooperation and care for one another. Together, they are stronger. And just as bees thrive through their interconnectedness and shared responsibilities, we too find our greatest achievements and deepest sense of fulfillment when we come together, supporting and lifting one another up. So it feels fitting that earlier this year we welcomed a new addition to our Roseville community, a hive, comprising several thousand Australian native stingless bees.

This idea originated from our Junior School's 'Rosie Bee Kind' club, which has been active for five years. Our original Rosie Bee Kind students, now in Year 8, raised funds for our community garden and the hive on our campus. Australian native bees play a crucial role in pollinating some of Australia's most unique native plants and will be a valuable addition to our grounds.





Local beekeeper Rachel Cambridge Potter educating students on environmental conservation efforts.





## BELONGING

Just days later, Guerlain launched their inaugural Bee School program for our Year 3 to Year 6 classes. This program aligns with their Women for Bees initiative, conducted in partnership with UNESCO, aiming to promote women's empowerment and biodiversity conservation. The program holds significant weight, with Angelina Jolie as the patron of both initiatives. With this global launch, Roseville students join 6,000 other children across ten different countries in learning about the vital role bees play in environmental conservation. Friend of Roseville College and local beekeeper, **Rachel Cambridge Potter** explained the science of bees to the students. Our collaboration with Rachel began several years ago through the efforts of our Technical and Applied Studies (TAS) Department and Junior School, focusing on waste-free and sustainable living, including beekeeping and honey production.

Also in attendance were a journalist and photographer from Marie Claire magazine, who prepared an article about our Bee School for their May issue. We're excited about our girls being featured, but more importantly, about the underlying purpose of our efforts - empowering women and girls from a young age through real-life learning experiences, enabling them to make a meaningful impact.

As **Miss Rebecca Cureton**, Head of IT Learning Integration and Junior School Coordinator of Student Growth, aptly puts it, "The Bee School program allows our students to actively engage in discovering the important role bees play in our daily lives and to understand why the protection of bees is so important to biodiversity and climate change. On a practical level, they are taught simple steps they can take to preserve their existence."

Our bees are already paving the way for genuine community service and learning. Collaborating with Kurring-gai Council, some of our students have taken on the responsibility for caring for certain parts of Skippy Park, close to campus, including weeding and planting natives to sustain our bees. Recently, we learned about the history of Roseville and discovered that Bancroft Avenue used to be a creek. There used to be a small rainforest area in the Park and we will contribute to the regeneration of that site. Of course, these programs are only feasible due to the dedication of our community: teachers and staff who go above and beyond to help our girls to take action.

Principal, **Ms Deb Magill**, is thoughtful about the deeper meaning of what she describes as 'extraordinary learning'. "Author and theologian, Frederick Buechner, uses a phrase that I often consider when thinking about careers education, or speaking with aspiring leaders in education. He says, 'The place God calls you to is the place where your deep gladness and the world's deep hunger meet.' And that is what we are trying to do with our girls each day; opening their eyes to opportunity, experiencing joy by serving and as a result, being gifted with a glimpse of a life of impact. These are experiences that our girls will remember for life."



"I appeal to you, brothers and sisters, in the name of our Lord Jesus Christ, that all of you agree with one another in what you say and that there be no divisions among you, but that you be perfectly united in mind and thought."

Corinthians 1:10







## A Sense of 'Us'



**I** remember walking across the courtyard on my first day working at Roseville College so clearly. My experience up to that point had been in co-ed and boys' schools and so I was used to ducking for cover from footballs and navigating handball games. But on my first day at Roseville, the courtyard was filled with group after group of girls, sitting in circles in the sun, revelling in being together. It was a moment I will never forget, speaking immediately to me of how much a Roseville College education is built on relationships - a palpable sense of 'us'.

Early in my career, I was taught how a Principal sets the culture of a school. But here, at Roseville College, I quickly learnt that things are a little different. The culture of this school is strong, and has been since 1908.

Hanging on the wall of my office is the letter written to Roseville's first Principal, Miss Isobel Davies from each student in the year our school started, 1908. They wrote:

"Before we leave you for our Christmas holidays we wish to thank you for the kindness and consideration which you have

shown... we have come to regard you, not only as our teacher, but as a friend, and as one who takes an interest in our doings not only in school, but also after school hours are over."

From the very first year our Roseville students were known and this was a place where kindness mattered.

Every day across our campus this is reflected. Just recently, four of our teachers shared what makes their classrooms a place of learning and care. One spoke of it being her role to set each child up for success, always ensuring that each girl knows that she holds them in high regard. Another said, "I never miss the opportunity to commend - in class, at sport, in the playground, at the school gate." Yet another spoke of the power of knowing each girl not only by name, but also by knowing what matters to her at school and in her life, and one spoke of making it her business to notice the little things (haircut, new pencil case etc.) because it is noticing the little things that says, "I see you."

Do you see the commonalities? From 1908 to 2024, our character was set, and has remained, for each girl to be seen, known



“From 1908 to 2024, our character was set, and has remained, for each girl to be seen, known and loved.”

and loved. These are the foundations for learning at Roseville that have stood the test of time.

There is so much of which we should be proud; our beautiful campus, our strong results, punching above our weight in sport (I love that!), our spectacular creative and performing arts, our high calibre teachers and a positive culture of learning for life. But of all things, our beautiful Roseville point of difference, is our people, working together with a common purpose in the education and care of our students - seen, known and loved. It was the case when **Miss Davies** started the school, it continued right through, including when **Mrs Joy Yeo** led the school and will still be when our 11th Principal starts sometime in the future.

When I walk through the playground now, there are still the circles of girls talking. But there are a few small differences. For our younger girls, often there will be one or two spaces kept free, in case other girls want to join the circle. Why? Because they know that being an inclusive community starts with them. From a young age they are people of responsibility and action; so truly impressive, aware of the difference they can make in the lives of others. That is the foundation for leadership.

The other big difference 14 years on is that in each circle I know the girls, and they know me. I remember conversations we've had, I know those who are shy and may avoid eye contact, I am aware of highs and lows in their lives, or in the lives of their families, I can often recall their school reports that I have read, I know who they are friends with, I've seen them play sport or debate, or recall small things about them that make them who they are. This is what makes leaving so hard.

Roseville College - you have become very dear to me. As I finish up my time, I do so with such affection. This is a beautiful school of which I am so proud. But it is a beautiful school because of you. And I am thankful.

Give thanks to the Lord for he is good. His love endures forever.

Psalm 136

**Our Principal from 2017-2024, Ms Deb Magill, has been appointed the next Headmistress of St Catherine's School Sydney from 2025.**

Having such a deep affection for you, we were delighted to share with you not only God's good news, but also our own lives, because you had become so very dear to us.

Thessalonians 2:8



A group of students in school uniforms are gathered in a courtyard, creating long, colorful paper chains. The chains are made of interlocking paper loops in yellow, blue, and red. The students are focused on their work, with some holding up sections of the chains. The background shows a building with a red door and other students in the distance.

# Strengthening Connections: Roseville's 24 Karat Magic Year

Our Year 12 theme for this year is '2024 Karat Magic', focused on celebrating the uniqueness within the Roseville family, forging meaningful relationships and recognising each student as a valued member of the community.

**Term 1 Focus:  
'Count on Me'**

Our Term 1 focus, 'Count on Me' nurtured Roseville's welcoming nature by strengthening connections within and across year groups.

In anticipation of the Taylor Swift Era's Tour, we enjoyed making friendship bracelets at lunchtime to express our gratitude for our friendships.

To celebrate International Women's Day, we hosted a week full of fun activities. On Monday, we wore purple ribbons, the official colour of International Women's Day, as a symbol of our empowerment of women across the globe. On Tuesday, we played a HERstory trivia game to recognise significant female contributions in history. On Wednesday, we decorated the



courtyard with chalk drawings of our personal aspirations and messages of gratitude to the important women in our lives. On Thursday, we learned about powerful biblical female figures in our talk in chapel. To end the week, Year 12 hosted a bake sale where all funds were donated to the Malala Fund, a non-profit organisation that supports quality female education in countries prone to gender discrimination. We loved seeing how the College was able to come together to support this worthy cause.

**Term 2 Focus:  
'Just the Way You Are'**

Term 2 shifted our focus to 'Just the Way You Are', which honoured the worth of each individual and focused on strong wellbeing.

Junior and Senior Schools collaborated to create a Spirit Week which was cohesive across the whole campus. 'Music Monday' started with a PC paper chain competition which symbolised uniting school spirit and creating connections. Students were enthusiastically involved in a scavenger hunt on 'Treasure Tuesday', which encouraged teamwork and problem-solving skills. The long-awaited student-teacher dodgeball match saw students encouraging the Year 12s in their historical defeat of the teachers on 'What-chu Doing, Where You At? Wednesday', which



created a palpable buzz at school. On 'That's What I Like Thursday', we celebrated Roseville's unique sense of humour in a college-wide meme competition. 'Finesse Friday' closed the week with a '90s-inspired free dress day, where all gold coins were donated to the Ku-ring-gai Women's Shelter, which offers relief for women facing domestic violence and homelessness. A school-wide game of scissors, paper, rock encouraged students to connect across year groups, and the combined college dance party in the courtyard perfectly



encapsulated what Spirit Week is all about – celebrating the wonderful community we have at Roseville.

**Term 3 Focus:  
'Finesse'**

Our Term 3 theme 'How Far We'll Go' focuses on increasing awareness about important issues, having a voice and acting for positive change. We look forward to finishing our school leadership journey with service and meaningful impact and can't wait to see students get involved with it.

*From the 2024 Prefects*

- Emily Barnard (School Captain),*
- Indiana Hunter (Vice Captain),*
- Emma Wilson (Vice Captain),*
- Hannah Alexander (Sports Captain),*
- Olivia Miller (Performing Arts Captain),*
- Bronte Appleyard, Charlotte Bailey,*
- Phoebe Barnes, Annabelle Benn,*
- Josephine Burn, Scarlet Cole,*
- Ruby Fitzgerald, Isabelle Fowler,*
- Charlotte Gordon, Matilda Hancock,*
- Tahlia Leffer, Chole Marchant,*
- Caitlin Pearce, Jessica Rye, Abbey*
- Sherwood, Charli Skarott, Sophie*
- Uy, Beatrice Vanasek, Naomi Wu*
- and Anika Zubrinich.*

## Cultivating Leadership and Belonging in Year 6

In the Roseville Junior School, leadership transcends titles; many students work together, and through participation a sense of belonging is created. At the heart of this ethos lies a simple philosophy – every student in Year 6 has a role to play. From School Captains to Library Innovators, each position contributes to our school community.

**Mrs Abi Woldhuis**, the Head of Junior School, sheds light on the significance of involving everyone in Year 6 in leadership roles.

“Leadership is about more than just leading; it’s about belonging, fostering a sense of responsibility, and serving your community,” she explains. This holistic approach not only empowers students, but also nurtures a collective spirit that strengthens the school’s foundation.

During the Year 6 Leadership Induction ceremony, all new leaders were presented to the Principal, **Ms Deb Magill** and an audience of very proud parents.

In her speech, **Ms Magill** highlighted the fundamental principles students should embody as leaders: compassion, humility and kindness. She also reflected that leadership is about influencing others, echoing the words of John Maxwell: “Leadership is influence, nothing more, nothing less.”

“Biblical wisdom serves as a guiding principle for our young leaders, encouraging them to value others above themselves” says **Mrs Woldhuis**.

The enthusiasm of our Year 6 leaders is contagious. Each leader, regardless of their specific role, shares a common pride,

responsibility, and commitment to making a positive impact within the school community.

In a world often characterised by individualism, the Junior School leadership model stands as a testament to the power of collective responsibility, where every member contributes to the success and harmony of the whole. It is through this inclusive approach that the Junior School not only moulds effective leaders, but also cultivates a sense of belonging.



Ms Magill presented each Year 6 leader with a badge at the Leadership Induction Ceremony





*Our Year 6 Leaders: Every student in Year 6 has a role to play.*

‘Do nothing out of selfish ambition or vain conceit. Rather, in humility value others above yourselves’

Philippians 2:3



“I’m a problem solver so I love this role, it gives me a voice.”

Chloe Combes  
Social Action



“It is fun working together and finding items we can improve in the school.”

Illaria Ruberto  
Prefect



“I love helping the Kindys with their work. Mrs Dudley is so nice.”

Isabelle Mathews  
Kindy Buddy



# Emily Barnard

Roseville's Inspiring  
School Captain  
Class of 2024

## Heartfelt Leadership

Emily leads with humility and service. She emphasises compassion, organisation and delegation, ensuring all students feel valued and heard.

“A leader should be an advocate for the people and a friendly face so that people feel comfortable to make suggestions or voice concerns” says Emily.

Committed to creating a sense of belonging at Roseville, Emily’s efforts ensure every student feels like a vital part of the Roseville family.

## Cherished Aspects of Roseville

Emily’s favourite aspects of Roseville include the inclusive culture and the encouragement to explore a range of activities. She also values the seamless integration of the school’s Christian foundations into daily life, providing a supportive environment that prioritises student wellbeing and spiritual health.

## A Fond Farewell

As graduation approaches, Emily reflects on the deep sense of community she will miss. Roseville has been a second home, shaping her into the confident and compassionate leader she is today. Emily’s story is not just one of personal achievement, but also about the nurturing and empowering environment of Roseville College, which unlocks the potential within every student.

Thank you for your service, Emily. Roseville College miss you, but we look forward to welcoming you into our Alumni community.

Since her days as a bright-eyed Kindergartener in 2012, **Emily Barnard** has embodied the spirit and values of Roseville College.

## Beyond Classroom Engagement

Emily’s involvement in co-curricular activities is extensive.

Emily believes her participation in sport, particularly netball and basketball enabled her to build strong relationships across year groups, a wonderful aspect of sport at Roseville. One of Emily’s most challenging experiences was learning to play softball in Year 8. She was initially daunted by her lack of experience, but she found her teammates were so supportive enabling her confidence and skills to grow.

Debating is a passion for Emily, with her participation in the ISDA, SDN, and Archdale competitions since Year 5. The close-knit nature of the debating team has taught her invaluable lessons in collaboration and trust. Additionally, her musical talents shine in the Symphonic Winds and Lower Brass ensemble, where she plays the trombone.

“I’m also involved in the lunchtime Cru group. I love helping my younger Rosie sisters grow their faith in Jesus.” she shares.

“A leader should be an advocate for the people...”



# Wendy Johnson

nee Porteous

School Captain  
Class of 1960

school and seeing everyone again.” Wendy fondly recalls.

Wendy remembers influential teachers like **Mrs Wenger** (English and History), and **Mrs Gibbons** (Art), whose extensive knowledge and enthusiasm inspired students.

Wendy’s name is prominently etched first on the School Captain board in the Hall. She and the prefects diligently fulfilled duties like station and gate duty, ensuring girls wore their gloves and behaved properly when leaving school.



S Reaney, W Porteous, S Robertson, E Hain

After school, Wendy ventured to London, embracing the swinging ’60s on Kings Road while working in advertising. Later, she studied Visual Arts, eventually becoming an art teacher specialising in special education. Navigating an era without modern conveniences, she worked with the Department of Education without computers, mobile phones or the internet.

“In the ’50s and my working years, it was very simple. Education now is so ambitious and opportunities for girls are amazing. The Roseville girls are lucky.” says Wendy.

**R**eturning to Roseville for a tour, Wendy Johnson is struck by the enduring warmth and friendliness of the community. She is impressed by the many people who stop to say hello. As she explores the campus, she notes that while education has evolved to offer incredible opportunities, the heart and soul of Roseville, especially cherished friendships, remain unchanged.

“There was something wonderful about coming back to school and seeing everyone again.”

Wendy was the first student to complete the entire journey from Kindergarten to the final year (5th form) at Roseville, and one of the first four to finish the Leaving Certificate. In an era where secretarial careers were the norm, she recalls, “It wasn’t considered lady-like to be ambitious.”

Wendy reminisces about her time at Roseville. She took the train to school by herself from age six. Without a car, her father walked her to the train, and she walked home by herself and ran across the road when no cars were coming!

Friendship played a crucial role in Wendy’s time at Roseville. “I lived in Greenwich, **Sue Reaney** lived at Roseville, **Wendy Mooney** lived across the Harbour Bridge, and **Biddy Hain** lived elsewhere, so we couldn’t see each other in the holidays. There were no mobile phones and few cars. One of my favourite times was the beginning of term - there was something wonderful about coming back to

# Memories from a School Captain

**Anne Haberman**  
nee Waldram

Class of 1977



Year 12 1977



Anne Haberman 2024

**A**nne loved many activities. Her favourites were Interact (the successful fete raising funds for Rotary, where the senior girls wore gingham aprons), and being the lead role in the Year 11 school play; ‘The happiest days of our lives’.

“I was probably a painful goody-two shoes!” Anne Haberman muses, her humility endearing as she reflects on her selection as School Captain 1977 and her time at Roseville. As school captain, Anne strived to set a positive example, urging her peers to embrace school life. Her public speaking improved immensely despite a nerve-wracking, wobbly debut acceptance speech at Town Hall!

Anne and her fellow prefects balanced authority with infectious spirit. She remembers enforcing rules like ensuring students had their hats, hymn books and gloves, and didn’t eat in the streets, alongside enjoying prefect’s afternoon teas with boys’ schools. Anne also remembers fearing **Mrs Richardson**, the Principal. “Everyone loved her, but she was pretty strict!” Anne says.

There was a remarkable sense of belonging fostered within the College, where a feeling of community permeated every aspect of campus life. From dedicated teachers to the antics of our school mascot ‘Rosie the elephant’, the beloved school dogs and cheering at the athletics carnivals, every moment was steeped in a sense of inclusion.

After graduating from Macquarie University with a Bachelor of Teaching, Anne became a teacher-librarian. Her first role was in the Macquarie University library, followed by three and a half years at Roseville College then corporate training from which she retired last year.

In Anne’s life, Roseville College remains a vibrant thread. She cherishes old friendships with **Meredith Verge**, **Kim Williams** nee Shirley, **Kim Woollett** nee Taylor, **Kim Davies** and **Sharon Woolmer** aka Honey Brown.

Anne Haberman’s experiences exemplify the timeless virtue of leadership and belonging, underscoring that true greatness lies in the impact we make on others and the communities we nurture.

# How Sport Connected Two Roseville College Girls Across Continents

Hayley Wilson (Class of 2011) and Zoe King (Class of 2016) play Netball for the San Francisco Stars Netball Club. Their team San Francisco Stars Cosmos won the 2023 Ladies division of the US Open Netball Championships in New Orleans.

**I**n vibrant San Francisco, amidst skyscrapers and the Golden Gate Bridge, Hayley and Zoe, united on a netball court, far from the leafy North Shore. Their story highlights the impact of sport in fostering connections and creating belonging, even in unfamiliar territory.

Hayley's relocation to San Francisco with her American partner post-COVID, marked a new beginning. Securing a work visa and employment, she sought community through the San Francisco Stars Netball Club, where she met Zoe - they were both Roseville girls! Reflecting on her early days, Hayley recalls her eagerness to connect with others. Despite doubts about netball's popularity in America, she attended her first training session at a makeshift court in Mission Bay. With chalk-drawn lines and aged basketball hoops, it was a stark contrast to Sydney's pristine indoor courts! Yet, she swiftly felt at ease.

Zoe's American journey included studying at Duke University on the Robertson Scholarship, earning a Master's in Community Health and Prevention Research at Stanford, and working as a Research Coordinator for Stanford Medicine.



“After leaving school, you realise how truly lucky you are to have these sports, right at your fingertips.”

Hayley Wilson.

Both Alumni fondly recall their time at Roseville College, where beyond netball, they engaged in various sports. “I’m very grateful for the countless opportunities I had at Roseville to play sport. After leaving school, you realise how truly lucky you are to have these sports, right at your fingertips.” says Hayley. Zoe particularly cherished interactions with Mrs Lee and her PC group.

The resilience and determination instilled in them at Roseville have become indispensable when embracing new challenges abroad. Hayley also reflects on invaluable life lessons sports impart, such as teamwork, leadership, perseverance and resilience, which extend far beyond school grounds.

As Zoe prepares to start a PhD in Sydney, and Hayley bids her farewell, they are grateful for the twist of fate that brought them together. Their bond serves as a reminder that the spirit of Roseville College - of friendship, camaraderie and shared experiences - endures.



Prep Lead Teacher, Ms Victoria Parish (Class of 2005) with the commemorative plaque featuring handwritten names of each student in our inaugural Prep class.



“We see each child as a powerful learner, and they are continually proving this to be true.”

Principal, Deb Magill to the Class of 2024 Prep parents

# Prep School Opens its Doors

A New Chapter in our 116 Year History

**I**t was a perfect, sunny day in May when we officially opened our new Roseville College Preparatory School.

Principal, **Deb Magill** and special guests **Philip Bell** OAM, Chair of the Board of the Anglican Schools Corporation and **David Irving**, Chair of Roseville College Council, welcomed a gathering of our current and future Prep families to the opening. The occasion was marked by the unveiling of two commemorative plaques, including a very special one featuring the handwritten names of each student in our very first Prep class.

The eagerly anticipated event was a significant occasion in our rich history as it saw the transformation of a Federation home on our campus, into a purpose-built indoor and outdoor learning space designed to ignite curiosity and creativity in our youngest Rosie girls.

To all Prep 2024 families, we are thrilled to be embarking on this journey together as your girls learn, grow, belong and serve in our Roseville community.

*Our first Prep Class 2024*



# Row, Row, Roseville!

Celebrating 30 Years of Excellence,  
Tradition and Community



**Mrs Barbara Gordon**  
Roseville Regatta 2024

**T**his year marks 30 years since Roseville College began rowing in the IGSA competition, a sport steeped in tradition, passion and unwavering community support.

Science Teacher, **Mrs Barbara Gordon** and Judge **Fred Kirkham**, former Olympic Rower and President of the P&F Committee introduced rowing to the College. Little did Mrs Gordon or Judge Kirkham know, they were igniting a legacy that would endure for decades.

Fast forward to today, and the Roseville Rowing program has become a significant part of the College's sports program. At the 2024 NSW Schoolgirl Head of the River, the pinnacle of the rowing competition, Roseville claimed a remarkable 6th place out of 34 schools, with an impressive 4th place in the gold medal tally.

## Embracing All: A Culture of Inclusivity

At the heart of Roseville's success lies its inclusive ethos. With a junior squad boasting 32 girls and a senior squad of 26, the program welcomes all who dare to try. The 'Learn to Row' program spanning over four weeks in Term 3, extends an invitation to all students from Year 6 to Year 11, offering a taste of the sport.

Led by **Mr Gonzalo Briones**, an esteemed coach with Olympic coaching credentials, and a team of dedicated coaches, the girls learn the fundamentals while also cultivating enduring friendships.



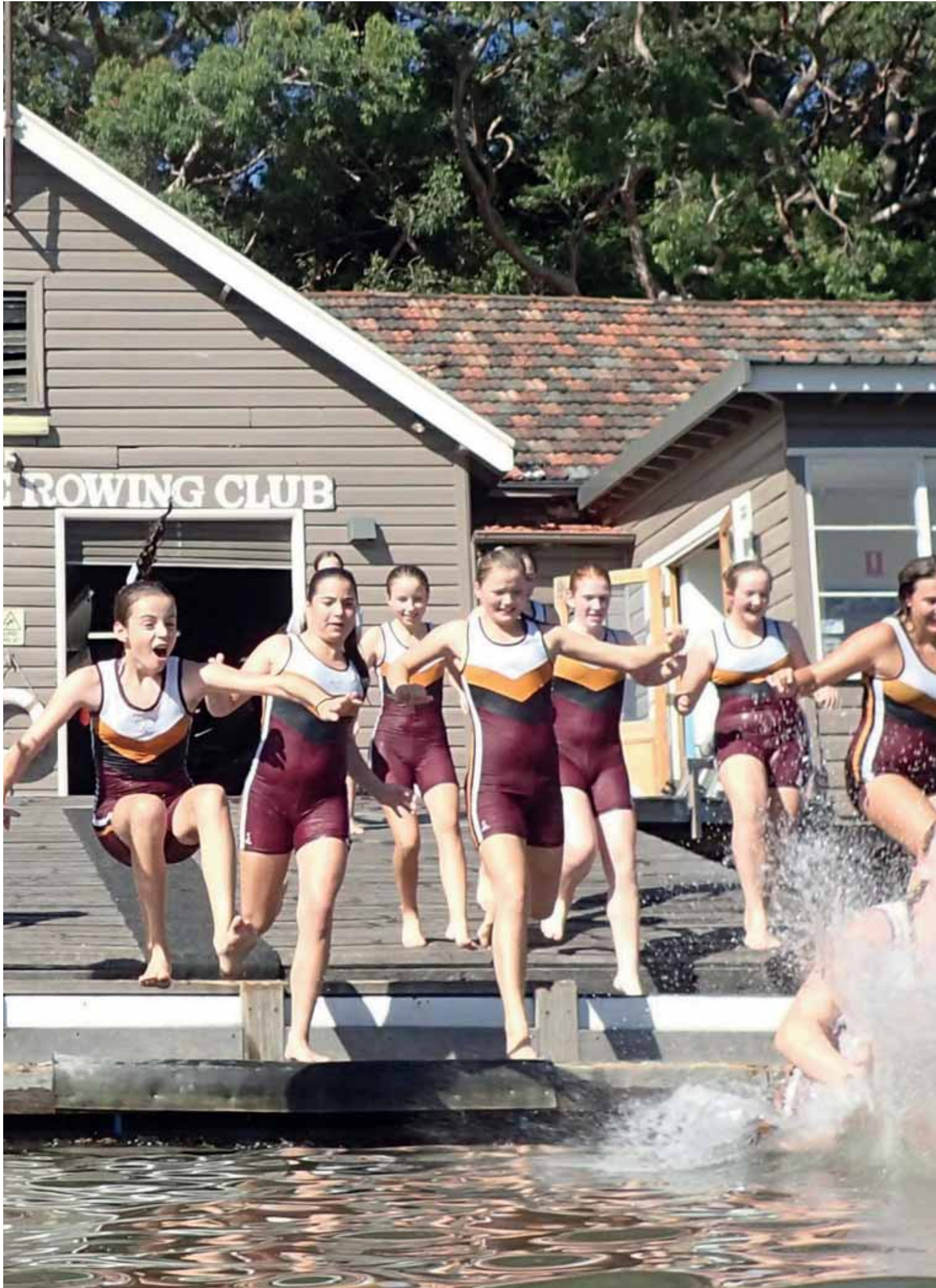




“2024 was our best  
ever performance at  
the Head of the River.”

Mrs Suzi Litchfield nee Woods (1987),  
Director of Sport at Roseville College.







**Indy Burke** (Class of 2016) continued to competitively row after graduating and has been an inspiring and passionate coach. Indy reminisces about her initiation into the rowing program in 2012, “I didn’t know much at all about the sport but my friends signed me up on what was then, a paper sign-up sheet!” she chuckles. She quickly progressed to the Senior Four for Years 10, 11 and 12 before becoming Rowing Captain in 2016. To this day, she still coaches rowing at Roseville, growing up the next generation of Rowers.



*The 2016 School Girl 4+ came second at the Head of the River. L to R: Alex Bailey-Coleman, Charlotte McBrayer, Sophie Sneyd, Indy Burke and Ruby Shevlin.*

### Beyond the Waters

Rowing isn’t just about winning races; it’s about shaping champions for life. The discipline instilled on the water permeates all facets of a rower’s life; fostering time management skills and resilience, preparing them for success in all endeavours, the ultimate team players.

“When I was at school, many teachers used to tell us we’d do better academically as we’d learn to manage our time more effectively. I now know this is true.”

*Indy Burke (2016)*



### A Week in the Life: Balancing Discipline and Camaraderie

Training unfolds at the North Shore Rowing Club, where Roseville's boats find their home. Mornings see parents ferrying the girls to the club for 5.30am starts, with a convenient bus service ensuring a smooth commute back to school and both ways in the afternoons. Sessions are structured to optimise resources and foster skill development. Fitness sessions in the hall, before and after school, blend rigorous workouts with light-hearted camaraderie, epitomised by the beloved 'Gonzalo Ball' a modified version of dodgeball that coach Gonzalo played in Spain as a child. On weekends, families gather at venues like the Sydney International Rowing Centre and Iron Cove, their unwavering support testament to the program's familial bonds.

### Anchoring the Spirit with Traditions

From the iconic boat christening ceremony to January rowing camps and the 'Send-off', traditions are the lifeblood of Roseville's rowing program.

#### Boat Christenings

The naming of boats after significant figures in the school's history honours their legacy.

New boats are christened at the end of the first official training of the season, after the 'Learn to row' program. The whole squad attends this cherished day, as well as parents, members of the School Executive and Principal, **Ms Deb Magill**.

The Christening is marked by speeches and a blessing, followed by champagne being ceremoniously poured over the bow (front) of the boat.

"It is a much-loved and very positive way to mark the start of the season." says Indy. "There is a boat named after my best friend **Aimee Watson's** (2016) dad, Doug - the 'Watson Rose' - who was the President for many years and is synonymous with the cheer 'Row Row Roseville'."

"I had tears in my eyes when I walked through the send-off tunnel lined by our rowing family and supporters."

Charli Griebel,  
2024 Rowing Captain.



Congratulations to **Hannah Alexander**, Year 12 2024 Sports Captain who has been selected in the NSW Junior Pathways Rowing squad for two years in a row. An extraordinary achievement!

## Rowing Camps

Each year, the squad bonds during intensive training camps, forging friendships lasting a lifetime.

The Senior squad spends an intensive week in Canberra, and the Junior squad trains every day at Longueville. The aim of these camps is fitness and friendship. There is optional holiday training before this, but January Camp is when the team comes together to get ready for racing in Term 1, and to determine the crews for the regattas. Seat racing of 500m to 2km happens now and crews form. "Camp week is an essential event for creating camaraderie, team building and time together on and off the water" says Mrs **Suzi Litchfield**, Director of Sport.

## 'Send Off'

Every year the whole squad and their families 'Send Off' the Senior 4 and Quads before their last ever races at the NSW Schoolgirl Head of the River. Oars are held up in the air by other Roseville rowers close to the water and families and supporters create a tunnel. The rowers and their coaches walk through their supporters cheers down to their last race. "It is very emotional and normally there are tears from the girls and the supporters. Even as a coach it makes me want to cry each year!" admits Indy.

## A Family Affair

Rowing at Roseville isn't just a sport, it's a family affair. Parents and siblings rally on the sidelines, their cheers echoing across the waters, as rowers push their limits. The 'Row Row Roseville' war cry resonates with pride and passion, embodying the support of the entire community who support all the rowers, not just their own children or friends.

The Rowing Support Group, led by President **Paul Griebel** for many years, is made up of ten volunteer parents representing all year groups and all parents are involved. The Fundraising Committee plans the Roseville Regatta, and the end of Season Fundraising Dinner which celebrates the year's achievements and raises funds for the club. In 2024, the community raised an impressive \$40,000 at the dinner which will be used to buy two training quads, in addition to the ten ergs which were donated at the end of the 2023/24 season.

As Roseville College commemorates 30 years of rowing excellence, the keys that define the program endure - tradition, passion, inclusion and unwavering community support.

## Row Row Roseville!

## OUR BOATS

**SUPPORTER'S ROSE**  
Parents, siblings and friends.

**BOSHIER ROSE**  
Margie Boshier, Teacher of 46 years.

**HINEMOA ROSE**  
First Roseville College building in 1908.

**WATSON ROSE**  
Doug Watson, Ex President of Rowing Support Group.

**PRESTON ROSE**  
Margaret Preston, Artist.

**CUTHBERT ROSE**  
Betty Cuthbert, Athlete.

**CHISHOLM ROSE**  
Caroline Chisholm, Nurse.

**FRANKLIN ROSE**  
Miles Franklin, Writer.

**GORDON ROSE**  
Barbara Gordon, Roseville Rowing Founder.

**REDPATH ROSE**  
Sally Redpath, ex Rowing Coordinator.

**DAVIES ROSE**  
Isobel Davies, ex Principal.

**RICHARDSON ROSE**  
Mary Richardson, ex Principal.

**HONEY ROSE**  
Mavis Honey, ex Principal.

**YEO ROSE**  
Joy Yeo, ex Principal.

**SCOTT ROSE**  
Briony Scott, ex Principal.

**ISOBEL ROSE**  
Isobel Davies, ex Principal.

**LILLIAN ROSE**  
Lillian Davies, ex Boarding Mistress.

**CENTENARY ROSE**  
2008, School Centenary.

**BRIONES ROSE**  
Gonzalo Briones, Head Coach.



Schoolgirl Head of the River 'Send Off' 2023



## Game on: Unveiling the New Sports Uniform

Roseville College's Sport Uniform Redesign

**R**oseville is set to introduce a redesigned sports uniform suite, the launch coinciding with the opening of our state-of-the-art sport and wellbeing centre.

At the heart of this change lies a collaboration with esteemed Australian fashion designer, **Jonathan Ward**. With broad experience with retail brands including YSL and RM Williams, Ward has since gone on to specialise in uniform design. First with airlines including Qantas and Emirates and now with schools such as Barker College and PLC Melbourne. With his keen eye for style and a deep understanding of our ethos, Ward embarked on a journey to bring the essence of Roseville into every element of the redesigned uniforms.

Reflecting on his approach to the project, Ward emphasised the importance of maintaining the distinctive 'handwriting' of Roseville while infusing a contemporary flair. Assisting Ward and the

Uniform Committee was Roseville College Archivist, **Brooke Hillsdon**, "Through delving into our archives, Jonathan and I carefully examined photographs, documents and artifacts. This exploration provided valuable insights into the evolution of our school's identity while offering a profound understanding of the role uniforms played in shaping our community. Drawing from this wealth of historical context, we were able to craft a uniform redesign that honours tradition while embracing modernity."

Ward acknowledged the significance of both sport and academic uniforms in shaping the student experience. "Comfort and confidence are integral to the learning experience. When students feel comfortable and look good, they are better equipped to thrive academically - and personally," he added, underscoring the sensitivity with which the project was approached. Both parents and students were invited to contribute during uniform feedback sessions so they were well placed to influence the design decisions.



Principal **Ms Deb Magill** says, “this initiative represents more than just a cosmetic change; it symbolises growth, innovation and a continued commitment for our girls to be and to feel their best. I have no doubt that our students will be comfortable in their new uniform, proud of their school and equipped to participate wholeheartedly, whether that is during a PDHPE lesson or State or National Level competition.”

We know our girls will wear their new sport uniform with confidence and pride, ready to embrace any sporting challenge!

“When students feel comfortable and look good, they are better equipped to thrive academically - and personally.”



*Jonathan Ward, Australian fashion designer*

# Gillian Bariol

nee Nisbet  
Class of 1983

A Journey of Learning,  
Science and Sport

**H**ave you ever wondered where someone has journeyed in life? We embarked on a quest to reconnect with our school captain, scholar and star Tildesley Shield Tennis player, Gillian Nisbet.

When we reached out to Gill, she was taking a week off from her bustling career to hike the Grampians. Clearly, she remains a high achiever!

Conversing with Gill is like unlocking a treasure trove. With her warm demeanour and sharp intellect, Gill shares her journey, starting with photo albums.

## Memories from School

Leafing through her Year 12 book filled with signatures and heartfelt sentiments, we glimpse her academic and sporting achievements and the impact of her leadership and friendships.

Gill remembers final year students enjoyed privileges, including leaving early in free periods, a Year 12 area and the option of free dress - traditions that continue at the college today.



*Tildesley Success in Gill's photo album: Jackie Masters and Tracey Baird won the Tildesley doubles in 1982. In 1983 Gill and her sister Trudi were Runners up in the Doubles, and Jackie Masters won the Singles.*

“We were encouraged to push ourselves and tackle hard subjects like three-unit maths.” Gill reminisces. The Principal, “**Mrs Richardson** said we could do anything a man could do!”

There are many tennis photos! Gill says that Roseville winning the Tildesley Shield in 1982 and 1983 underscored the importance of teamwork, a lesson she still cherishes.

## Roseville Connections

Gill remains connected with **Debbie Borrow, Kristen Florence** (passed), **Tracey Baird, Katrina Ross, Debbie Cochrane, Virginia Norman** and **Karen Theodore**.

In 2023, Gill enjoyed the Alumni reunion. She says the beauty of reconnecting with school friends is despite the passage of time, you seamlessly pick up where you left off, but you are more mature and reflective.

## A Lifelong Learner in Science

Gill pursued honours and a PhD in Science at Sydney University, setting the stage for a remarkable career encompassing clinical work in nutrition and dietetics as well as research in workplace interprofessional collaborative learning. Today, as the Director of Partnerships and Placements at the University of Sydney, Gill champions integrated learning and collaboration in healthcare education.

Gill’s advice for aspiring scientists is to take a holistic approach to science, viewing it as a gateway to endless possibilities. “With communication skills and a curious spirit, scientists can create a meaningful difference, particularly in healthcare.” she says.

As we reflect on Gill’s journey, let us embark on our own with warmth, intellect and determination, knowing our memories and knowledge will guide us forward, just as they have for Gill.





## Eva's Cambridge Triumph Top of the World

We are incredibly proud of Year 11 student, **Eva Mai**, who came Top in the World in the Cambridge International Physical Science Course. This is an extraordinary result and we acknowledge the dedication and effort of both Eva and her teacher **Ms Dian Stewart**.



*Dr Alex Pentz,  
Head of Social Science*



*Dr Sarah Luke,  
English Teacher*

## PhD Congratulations

We warmly congratulate **Dr Alex Pentz**, Head of Social Science and **Dr Sarah Luke**, English Teacher, on the recent completion of their PhD research. We are proud of our teachers and the example that they set for their students of lifelong learning.

“Isabelle’s curiosity and determination were inspiring. She was dedicated to making a difference in the world around her. The award was the icing on the cake.”

Ms Farhat Naz, Assistant Head of Science





## Seeds of Success

Isabelle Fisher's NSW  
Young Scientist Award

**I**n the science labs of Roseville College, Isabelle Fisher's (Class of 2023) passion for the environment blossomed into a remarkable scientific achievement. In her HSC year, she was awarded the prestigious NSW Young Scientist Award for the best project relating to environmental protection and conservation for her HSC Science Extension project.

The award title alone might sound overwhelming to some, but the significance of Isabelle's research is simple; her study found a new way in which humans can conserve our environment. Her research focused on the effects of an established arbuscular mycorrhizal network on seed germination and seedling growth for *Acacia linifolia* and *Acacia ulicifolia*. This research and her findings could have direct and immediate relevance to bush regeneration methods for native species, many of which have precise requirements for germination, and beneficial implications for protecting biodiversity, carbon storage and forest regeneration.

"Isabelle's project was original and well thought out, in an area of research that is only just emerging. She won the Young Scientist prize for the abstract, creative and innovative ideas proposed in her study that linked to ways in which humans can conserve the environment," says **Miss Rebecca Collett**, Head of Science, "100% of our extension science students achieved the top bands in the HSC with E3s and E4s. This is testament to **Ms Naz's** excellent guidance and teaching. These results are outstanding, especially for a non-selective school."

Isabelle's meticulous experiment involved planting different species of native Australian wattle seedlings, adding an arbuscular mycorrhizal fungi mix to some. She hypothesised that this fungi mix would enhance germination and growth. "When the results supported this for one of my wattle species I was so excited," explains Isabelle.

The journey to this achievement was not a solo endeavour. Inspired by an artwork her mother created about trees communicating, Isabelle delved into the science behind the concept. "I was fascinated by the topic and also quite overwhelmed by the volume of information I came across," says Isabelle. With the guidance of her mentor from the University of Sydney and the wonderful support of her Roseville teachers, including **Ms Farhat Naz**, **Miss Rebecca Collett**, and **Dr Michelle Walker**, Isabelle says she transformed her fascination into a focused and achievable scientific investigation.

As Isabelle embarks on her next chapter at Charles Sturt University, studying Veterinary Technology, her passion for science and the environment continues.

Looking ahead, Isabelle hopes to complete a Doctorate in Veterinary Medicine, actively contributing to the veterinary industry and continuing to make a positive impact on the world. Her story stands as a testament to the power of curiosity, mentorship and the pursuit of knowledge in shaping a brighter and more sustainable future. We feel safer in your hands, Isabelle.





Emily Brown (centre), at Photon Water conference

## Emily's Engineering Excellence

Combining Science, Compassion, and Communication in Environmental Engineering

**I**n the realm of careers, few paths are as impactful as environmental engineering. For Emily Brown (Class of 2015), this journey began with a diverse array of subjects studied for the HSC at Roseville College.

Her curriculum included Drama, PDHPE, Art, Chemistry, Maths extension and English. Reflecting on her choices, she fondly recalls the influence of **Mrs Collins**, her inspiring Chemistry teacher, who seamlessly integrated holiday experiences into the science curriculum, making classes engaging.

Since her formative years at Roseville College, Emily has pursued academia, earning a bachelor's degree in chemical engineering followed by a master's



**Emily Brown**  
Class of 2015

in biomedical engineering. She explains that chemical engineering offers a broad foundation, allowing for diverse career paths. Traditionally, chemical engineers ventured into industries such as mining and oil, but there's a growing trend towards sustainability.

Delving into her career as a water remediation engineer, Emily's passion for making a tangible difference in the world is palpable. She emphasises her commitment to making a genuine impact through human-centred approaches focusing on water quality assessment, consulting and remediation with a strong focus on sustainability.

Many are unaware of the severity of water issues, which Emily likens to asbestos and silicosis. She recommends watching the movie

'Dark Waters' with Anne Hathaway, as it effectively explains the gravity of the water issues she's trying to tackle.

From contaminated lands to Indigenous communities lacking clean drinking water, Emily leads projects blending ingenuity with compassion. In one of her projects, she employs frequency waves from ultrasonic devices instead of chemicals to combat blue-green algae blooms, ensuring safe swimming conditions.

But Emily's journey isn't solely about technical expertise; it's about human connection and effective communication.

"There is a real place in STEM for good communicators. People do business with people. It's no different in the science space," says Emily.

Transitioning into technical sales, Emily now engages extensively with government officials,

councils and representatives from organisations such as the Australian and US Departments of Defence, as well as the Australian and US Environmental Protection Agencies. She travels regularly throughout Australia and to the United States due to the presence of major companies like 3M and Dupont.

Despite her global endeavours, Emily remains connected to the Roseville community, cherishing the bonds forged during her school days. "Nine years on, my cohort of Roseville girls are still so close; there are still 15-20 girls in my group," she shares, reflecting on the rarity of lifelong connections and mutual understanding.

As Emily continues her journey, blending science with empathy, she embodies the spirit of a true Roseville girl - compassionate, resilient, and driven to improving the world, one drop of water at a time.



Emily remediating contaminated groundwater in less than perfect conditions

## Advocating Careers Success

Thank you to Emily and our wonderful alumni for sharing their career pathways with our students. To be involved, please email [alumni@roseville.nsw.edu.au](mailto:alumni@roseville.nsw.edu.au)



Future 24 in July 2023 **Front row:** Angela Knight 1976 – Alumni Engagement, Emily Brown 2015 – Water Redemption Engineer, Caitlin Hardy 2013 – Real Estate, Jess Blake 2016 – Finance, Jess Menendez (nee Mason) 2002 – Education Programs, Bec Topp (nee Tattersall) 2008 – Lawyer, Terrie Franklin – Careers, Ms Deb Magill – Principal **Back row:** Jessie Baird 2018 – Interior Architecture, Sofia Walia 2021 – Studying Bachelor of Psychology & Bachelor of Cognitive Brain Sciences, Sharon Krimmer 2005 Insurance, Steph Gardner 2006 – Marine Biologist



*Gateway artist's impression: The 'Gateway' project will create a ribbon of green space connecting both sides of the campus and will feature an amphitheatre for performing arts, outdoor learning areas and other spaces to enjoy at recess, lunchtimes, before and after school.*

## A Gateway to Learning, Connection and Community

As the finishing touches are being made to the new Sport and Wellbeing Centre development, we have farewelled our old pool and are transforming the gateway into campus.

An unexpected construction challenge, where a new emergency water tank system needed to be installed as part of our Sport and Wellbeing Centre development, has been turned into an opportunity to open up a beautiful gateway of open space at the front of our campus.

From the sandstone and green wisteria arbour of the main gate on Bancroft Avenue, we are building an open and accessible pathway into campus. The old pool and the 1970's wing of classrooms above are being replaced by an outdoor amphitheatre - providing space

for gathering, learning, drama and music performance - a beautiful space for our girls to use each day.

Scheduled to be completed later this year, we look forward to welcoming you into campus through this beautiful new gateway.



The old pool opened with a synchronised swimming display in 1973

## Memories of the Mavis Honey Pool

“I did a bit of “water ballet” at the opening... Ester Williams style!”

*Louise Kimbell nee Brown (Class of 1976)*

“The Aquathon - running around the block with our swimming caps on!”

*Claire Bate nee Withers (Class of 1993)*

“The swim-a-thon! People donated \$1 per lap as my mum said I wouldn’t swim many. I did 70 laps!”

*Lisa Gilliland nee Eaton (Class of 1983)*



Swell artist’s impression: Opening in Term 4 2024, will house an indoor swimming pool, open-air multi-purpose courts, a nutrition and food technology space, a gym and additional flexible learning spaces. In honour of the Mavis Honey Pool that was, the new pool will have the same name.



“I am looking forward to seeing new faces in the pool, and know that we will be unstoppable when we are training in such great facilities!”

Bea Clark, Year 10  
*2024 Fastest Swimmer at Roseville*



“I’m looking forward to the opening of the outside amphitheatre. It will be an amazing opportunity for students to perform and learn in a new space.”

Phoebe Evans, Year 9



“I am looking forward to being able to express myself in the new dance studios and learn and give everything a try!”

Cassandra Wareing, Year 5



“I love Food Tech and the opportunities it provides for creativity. I am looking forward to the new kitchen having state of the art equipment and more bench space.”

Clio Knox, Year 9

# Success in Debating

Roseville students demonstrate exceptional skill in articulating their thoughts, presenting compelling arguments and engaging in spirited discussions through debating and public speaking. Here we celebrate the triumphs of two of our debating teams.



## Archdale Shield for Debating 2023

In an amazing achievement, our Year 7 debating team of **Grace Anderson, Sophie Xu, Sophie Noyce, Charlotte Deardon, Emily Lyons and Ellie Rutledge** won the Archdale Shield for the 7A Division for 2023.

In the nail-biting grand final debate against SCEGGS Darlinghurst, the girls showcased eloquence and critical thinking, ultimately clinching the coveted title among 24 IGSA schools.

Reflecting on the season, **Emily Lyons** shared her excitement about the team's first-ever Grand Final debate.

*"I enjoyed this debate because we had to rely on each other to persevere under time pressure, and then we got to enjoy winning together, knowing that everyone had played a part to get to this end stage."*

**Grace Anderson's** favourite debate of the season was about banning

people from damaged World Heritage Sites. This debate showcased the team's ability to incorporate timely knowledge, as they used information they had learned in their geography class earlier that day!

**Sophie Xu** reflected on the co-educational debate as one of her favourites, emphasising the importance of breaking gender norms in education and advocating for the best education for all students.

The pinnacle of their debating journey, however, was undeniably the Grand Final, where the team tackled the challenging topic of 'Abolishing trial by jury', a topic of interest to all the team.

*"We argued about bias/prejudice, time consumption, cost and more. As Affirmative, we also proposed a model where instead of the normal jury consisting of twelve people, we would introduce three judges on cases like criminal trials." recounted Sophie Xu.*

**Miss Rebecca Cureton**, Debating Coordinator, expressed immense pride in the team, saying their win was a testament to their shared dedication and camaraderie. She eagerly anticipates witnessing their continued success and growth in debating over the next few years in senior school. Well done girls!





## JA Thompson History Debating Champions

*Our Year 11 History Debaters, Jinty Crowther, Katia Clement, Rebecca Frantz and Sophie Firek were victorious in the JA Thompson History Debating competition in Term 1, 2024.*

**We caught up with the team to discuss their standout debates of the season:**

### The Semi Final

*“That Capitalism caused more harm than good between 1750 and 1918”.*

For Katia and Sophie, the Semi Final clash against St Patrick’s College Strathfield, stood out due to their meticulous preparation and effective use of evidence that propelled them into the Grand Final.

### Round 16

*“That the 1920s were a golden age”.*

Jinty says the debate against James Ruse highlighted the team’s adeptness in countering opposing arguments with historical depth and personal conviction, recalling the thrill of dismantling their counterarguments and leveraging historical context.

### The Grand Final

*“It is more beneficial to study the villains of history”.*

For Rebecca, the final debate against St Patricks Campbelltown was the most engaging yet, covering topics like the Holocaust, Civil Rights, and Ancient Emperors. “When we received our final topic for the competition, our immediate reaction was one of confusion - more beneficial than what? But with the help of the History department, we settled our model as preferring the study of villains as opposed to heroes. We wanted to explore history as a broader scope across thousands of years, from Nero of Ancient Rome to the Rwandan genocide of the 1990s.”

**Mr John Purcal**, our proud History Teacher and History Debating Coordinator, praised the girls for their impressive skills and unwavering dedication throughout the competition.





# From Roseville to the World Stage

A Journey with Bardot



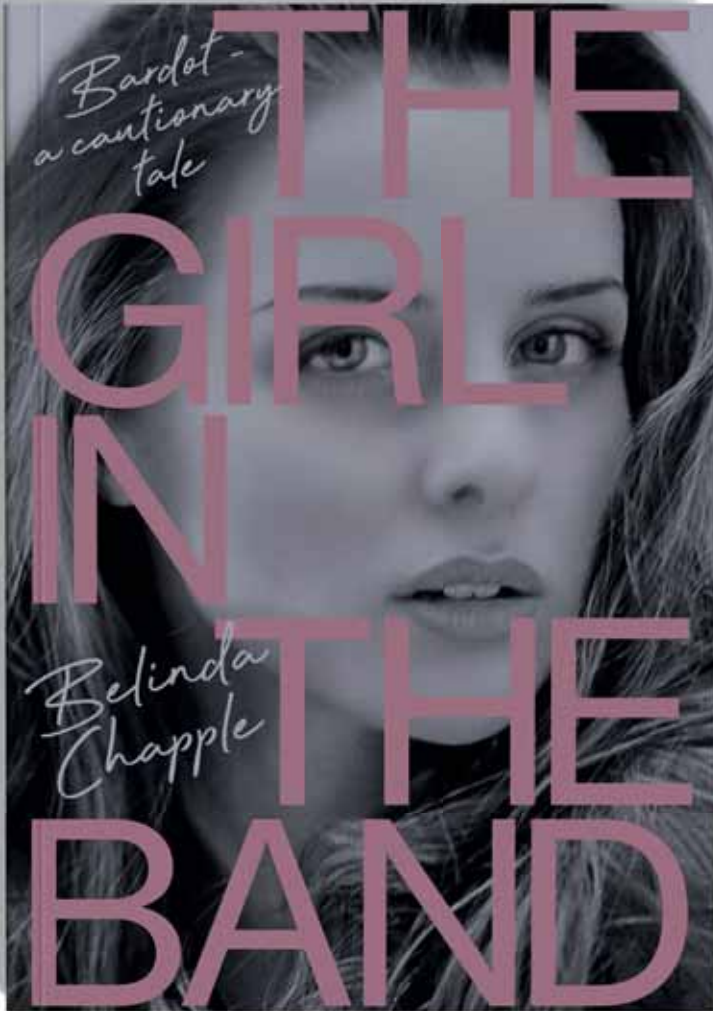
**Belinda Chapple Landin**

Class of 1992

**I**n the late 80s and 90s, for a young girl and her friends, Roseville College wasn't just a school, it was a sanctuary filled with laughter, camaraderie, and endless possibilities.

Little did she know that those formative years would pave the way for an extraordinary journey - one that would lead her to the glitz and glamour of the international music scene.






---

*THE GIRL IN THE BAND:*  
*BARDOT A CAUTIONARY TALE*  
 Belinda Chapple

---

Publisher: Simon & Schuster  
 Australia (August 30, 2023)

---

Meet **Belinda Chapple-Landin** (Class of 1992) known to many as 'Boo', a former Roseville College student turned international sensation. Fondly reminiscing about her time at Roseville, Belinda reflects on the profound impact those years had on her journey. "I cherish my time at Roseville with deep fondness," she says with a smile. "It was a period untouched by social media, where freedom seemed boundless."

Despite her packed school schedule, which included extracurricular dance and singing classes, long distance running, art and a love for softball, Belinda found solace within Roseville's walls. The musicals 'My Fair Lady' and 'Guys and Dolls' were also memorable times of enjoyment. She fondly remembers teachers like **Mrs Megan Krimmer** and **Mrs Margie Boshier**, whose guidance left a lasting impression. And then there was **Mrs Angela Knight**, "whose Physical Education classes were filled with positivity and support." she says.

After leaving school, Belinda wasted no time diving into the world of entertainment. From commercial dancing and modelling to singing in various bands, her talents were undeniable. In 1999 she stumbled upon the opportunity of a lifetime - the audition for 'Popstars', Australia's first ever reality TV show, which would ultimately lead to the formation of Bardot.

Joining Bardot catapulted Belinda into a whirlwind of excitement and adventure - a new reality. "The most enjoyable aspect of being in a girl band was undoubtedly the thrill of travelling to numerous countries around the globe and sharing our music with diverse audiences," Belinda recalls with nostalgia.

But Belinda's journey didn't end with Bardot. In fact, it was just the beginning. Since her time in the spotlight, she has ventured into entertainment production, television, notably the creation of 'Paper Dolls' now screening on Paramount and interior design. Recently she has authored a book titled 'The Girl in the Band,' published by Simon & Schuster, which delves into her remarkable experiences and includes mentions of her time at Roseville. "One of the greatest blessings of my career has been the ability to continue travelling in tandem with my work. This has not only enriched my personal growth, but also broadened my professional horizons, exposing me to fresh perspectives and inspirations," she says.

Reflecting on the changes in the entertainment industry over the past two decades, Belinda acknowledges progress while recognising challenges. "There's been a notable increase in women assuming powerful roles within the industry, signalling a positive shift towards great inclusivity and influence," she remarks, remembering her experience of powerful men in suits.

And when it comes to contemporary icons like Taylor Swift, Belinda sees hope for aspiring artists. "Taylor Swift stands as a beacon in this evolving landscape," she explains. "Her presence offers a source of inspiration and hope, showcasing the potential for women to thrive and make their mark in the entertainment industry and beyond."

Today, Belinda finds joy in both her career and personal interests. Whether it's bushwalking, practicing yoga, exploring the art galleries worldwide, or spending time in Spain with her husband, she embraces life with enthusiasm.

As she looks back on her journey from Roseville to the world stage, Belinda remains grateful for the friendships she formed along the way. "**Emma Wright** and **Megan Ford** have been dear friends since leaving school," she shares warmly. "And thanks to social media, I'm able to stay in touch with many others."

For Belinda Chapple-Landin, Roseville College was more than just a school, it was the launching pad for a remarkable adventure that continues to unfold with each day.

“Roseville College wasn't just a school, it was a sanctuary filled with laughter, camaraderie, and endless possibilities.”

# THE WIZARD of OZ

## Musical Extravaganza

**I**f there is a guaranteed method to foster belonging and community, staging a musical is a microcosm of participation. This year, over 110 students and staff, including over 20 musicians, were involved in crafting our Senior School production of 'The Wizard of Oz', a show that Roseville College last presented over 30 years ago in 1993.

But it is not only the bright talents of our on-stage performers that shines in a musical, it is also a place for a magnitude of behind-the-stage talents to come to the fore - choreography, lighting, orchestra, sound engineering, stagecraft, costume design, to name a few, with each being pivotal to the seamless execution of a musical extravaganza.

Ms Eliza Bell, Dean of Creative Arts says 'Participating in a musical production fosters a profound sense of belonging, as individuals from diverse backgrounds and talents come together. Each role contributes to a collective effort that transcends individual capabilities. The magic that the audience experiences is a direct result of this powerful synergy, where combined talents create something truly extraordinary.'

*"Participating in a musical production fosters a profound sense of belonging..."*



---

### Year 12 Mentors



Year 12 students **Olivia Miller** and **Tahlia Leffler** made a huge contribution supporting rehearsals, assisting with dances, acting, and scene work. "I loved being a friendly face students could look to if they needed advice," said Tahlia. Olivia enjoyed the problem solving aspect of their role.

---

### Assistant Concertmaster



**Sophia Zhou** (Year 11), a talented violinist, led the Orchestra. "I love working with so many talented musicians creating beautiful music together." says Sophia.

---

### Choreography



**Felicity Cribb** (Class of 2022), an acting student at the Actor Centre Australia, oversees choreography. "Felicity is incredibly artistic and the musical is so much richer due to her talents," said Ms Bell.



## 1993 Wizard of Oz

31 years ago in 1993, Roseville College presented a memorable production of “The Wizard of Oz”.

The audience was captivated by the innovative performance, particularly the cast who daringly rollerbladed along the Yellow Brick Road, a modern twist ahead of its time. As Roseville College brings this beloved musical back to the stage this year, memories of that enchanting 1993 performance are rekindled, reminding us of the creative spirit and community pride that have long been hallmarks of Roseville College.



*Know these people? Email [alumni@roseville.nsw.edu.au](mailto:alumni@roseville.nsw.edu.au)*



*Michelle Chase nee Dale, Kimberley Moore, Martina Buchter, Emma Cooper*



*Kimberley Moore*



*Alison Wardman*



♪ We're off to see the Wizard, ♪ say 2000



Producer/Director, Miss Ambrose



Follow the Yellow Brick Road!



More than 2000 were in attendance during the last week of second term when the girls of Roseville College, brilliantly directed by Miss Ingrid Ambrose and with a cast and crew of nearly one-third of the school, put on three spectacular performances of this all-time favourite musical.

The orchestra created the atmosphere by playing an overture of all the well-known tunes, including *We're off to see the Wizard*, *If I Only had a Brain* and of course, *Somewhere over the Rainbow*.

All aspects of the production that followed provided a most professional and entertaining evening. The chorus sang with great enthusiasm, supporting the main cast to the full, while in the Land of Oz every character was dressed with creativity and colour, complementing the terrific stage scenery. The choreography was brilliant: the dancers in the tornado scene, the "white ghosts" at the witch's castle, and the tap dancing soldiers, especially catching my attention. The audience revelled in the perambulations of the yellow-brick-road roller bladers, who cruised around both stage and hall with carefree abandon.

The participation was not restricted to the senior school however, and the younger girls who played the "dreaded Jitterbugs" of the forest danced beautifully and definitely spread their charm.

The main cast of the musical included Martine Buchter as Dorothy, Kimberley Moore as the clumsy Scarecrow, Emma Cooper as the Tin Woodman, Michelle Dale as the extremely funny and cowardly Lion, Miriam Butler as the beautiful Sorceress of the North and Alison Wardman as the stunning Wicked Witch of the West. These girls did a marvellous job, enthralling the audience, and often having them in stitches.

In a performance that had so many highlights, not everyone who contributed to the show can be mentioned, but all are to be commended for a most bright and enjoyable production of the *The Wizard of Oz*. Well done, all that rehearsal paid off!

Miriam Bayliss Year 12



### The Wizard of Oz

Producer & Director Miss Ingrid Ambrose

#### Cast

Aunt Em.....	Emily Stinson
Joe.....	Katerina Sarlas
Uncle Henry.....	Anna Cockerill
Dorothy.....	Martine Buchter
Mayor of Munchkins.....	Michèle Kwik
Munchkin Farmer.....	Sarah Stinson
Sorceress of the North.....	Miriam Butler
Wicked Witch of the West.....	Alison Wardman
The Scarecrow.....	Kimberley Moore
The Tin Woodman.....	Emma Cooper
The Cowardly Lion.....	Michelle Dale
A Private.....	Amanda Quayle
An Old Lady.....	Elizabeth Gellatly
Lord Growlie.....	Samantha Castle
Gloria, his daughter.....	Nicole Caraplet
The Wizard of Oz.....	Katerina Sarlas
Ozmas.....	Janece Keller
First Witch.....	Sarah Stinson
Second Witch.....	Jessica Balfour-Ogilvy
Tibla.....	Elizabeth Gellatly

Assist. Directors  
Mrs Wendy Atmore  
Mrs Gillian Napper  
Mrs Sharon Robinson

#### Choreography

Mrs Glynn Ianno  
Mrs Ann Meikle  
Mrs Carol Palmer

#### Scenery

Mr Ken Cattell  
Mrs Sharon Robinson  
Prompt Scenery

#### Costumes

Mrs Glenys Dickson  
Mrs Karen Warburton  
Mrs Ann White

#### Make-up & hair

Mrs Elizabeth Brough  
Mrs Irene Thill  
Mrs Jill Gray

#### Lighting & Sound

Mr Roger Hind

#### Backstage

Mr James Denton  
Mr Nicholas Thill

#### Programme

Mrs Michele Levitt  
Dr Michael Levitt

#### Advertising

Mrs Margaret Boshler  
Mrs Margaret Withington  
Mrs Elizabeth Port

#### Prompts

Phillipa Cocks  
Chloe Scott

#### Business Managers

Mrs Vera Cranston  
Mrs Beverley Offery

#### Drops

Mrs Linda Wobith  
Mr Ken Cattell

#### Tickets

Mrs Jan Armstrong  
Mrs Elaine Elliott  
Mrs Jill Gray  
Miss Joy Andrews  
Mrs Cynthia Hughes

#### Photography & Video

Mrs Karen Warburton

#### Orchestra

Piano.....	Mrs Espeth Deaker	Clarinet II.....	Jane Withers
Violin I.....	Kathryn Betts	Bassoon.....	Nicole Barber
Violin II.....	Anneke Altman	Saxophone.....	Alison Hopkirk
Viola.....	Marion Pfuhl	Trumpet I.....	Samantha Parsons
Cello.....	Karella Mitchell	Trumpet II.....	Shelley Anderson
Double Bass.....	Belinda Chan	Trombone.....	Tim Roberts
Flute.....	Fiona Lucas	Drums.....	Murray Winton
Oboe.....	Sally Lucas	Percussion.....	Cassandra Wheeler Amelia-Jane Davis
Clarinet I.....	Jane Lucas		

And the 130 girls of the Chorus, the Dancers, the Roller Bladers, the Munchkins, the Jitterbugs and the Backstage Crew

# 5 minutes with...

Isobel Edmunds, Class of 2023

We were thrilled to learn that Roseville Visual Arts student, **Isobel Edmunds**, received the top honour of inclusion in the annual ARTEXPRESS exhibition, touring various NSW galleries in 2024.

**Tell us about your work...**

I experimented with a hyper realistic style of traditional still life painting inspired by watercolour artist, Margaret Ackland and her series 'A Balancing Act' which uses reflective surfaces to create complex compositions showing personal moments in everyday life.

**How many hours did it take you?**

My artwork took about 200 hours in total. I began researching and planning in the Christmas holidays and in total it took about eight months, spending on average of about six hours a week working on it.

**How did you feel when you were selected for ArtExpress?**

I was so surprised, and I felt extremely fortunate to be selected considering there were many artists at Roseville who deserved the recognition as much as me.

**What was it like to see your work displayed in the gallery?**

I went with my parents, brother and grandparents to the Tamworth exhibition of ARTEXPRESS in March. It was almost surreal seeing my art in an art exhibition. I loved seeing the other students' work and feel so privileged to be a part of it.



**Who inspired you?**

Both my art teacher, Mrs Charalambidis and the Head of Visual Arts, Mr Wells had an enormous impact on my work. They were both incredible helping me through this process and I am still so grateful for their guidance and support.

**What are you doing now?**

I am studying physiotherapy at ACU in North Sydney, which I am loving, and I spend my weekends indulging my passion for art. It's the perfect balance!



Isobel Edmunds (Class of 2023)

# Young Archie Finalist 2024

Alice Bestic, Year 10

*Self-portrait  
Charcoal on paper*

I started this artwork in class as a part of an introduction to charcoal and was surprised and happy with the way it turned out. It is a good reflection of how positive I often feel about things.



Showcased at the Art Gallery of NSW alongside the Archibald, Wynne and Sulman Prizes from 8 June to 8 September 2024. An outstanding achievement for Alice and our talented Roseville College Visual Arts teachers.

## Writing excellence

At Roseville College, we believe in the transformative power of words, where students are not just readers but creators, empowered to find their unique voice and to explore ideas that resonate on a personal level. Through the exploration of literature, we foster a deep appreciation for diverse narratives and perspectives, nurturing empathy and understanding. Our curriculum aims to create a space where students can explore their identity and their world, writing pieces that inform, inspire, enlighten and challenge.



Aurelia Beattie  
YEAR 7

*This is an edited extract from Aurelia Beattie's speech that was written in response to her Year 7 studies of Powerful Voices in our Society. Aurelia explores the power of speech to challenge her audience and calls upon them to choose compassion to make a difference to the world.*

### Powerful Voices: Making a Difference

Good afternoon fellow world changers. What do you think would make a big difference to the world we live in? You might think that in order for something to make a big difference, it needs to be a big change out there somewhere. But actually, it is a small change in each of our hearts, that would really make a difference to the world.

Our world is broken. Selfishness and greed flood our society, with people taking what they don't need and keeping it from those who do. 1% of the world's population owns nearly 50% of the world's riches. It's like a piece of toast with all the vegemite in one tiny corner. No one wants to eat that. How can we fix this shattered world? Compassion is our answer.

Com means "with" and passion means "suffering" so compassion means being with someone when they are suffering. If we adopt compassion then it will weave its way into every thing that we do and have a ripple effect on those around us. Mistreatment of people with disabilities, world hunger and even homelessness are just some of the many problems of this world that we could solve with compassion.

**"Compassion is vital for a brighter future. Choose compassion."**

Compassion helps us care for people with disabilities. 16% of the world's population, 1.3 billion people have significant disabilities. That's 52 times the population of Australia! People with disabilities are often more vulnerable to bullying and neglect. How would compassion make a difference to a person with a disability? How could you make a difference? Sometimes when people look or behave differently, it can be easy to forget that they are a special and unique human being like you and me, with feelings that can be hurt. However, when you put on your compassion hat and step into another person's shoes, you might decide to smile, say hi, talk with them or even sit with them. We need to remember that their disability doesn't define them and we don't have the right to treat them differently. They are all citizens of the world and they deserve to be treated like it.



Rachel Clemens, Stacey Leung, Zoe Yuan, Sophie Chow and Amber Teh  
YEAR 6

*Teamwork makes the dreamwork. This text was written as a collaborative piece in which students were challenged to move through the process of ideation, planning, writing and editing as a group. The students had to share their ideas, find compromise, assign roles and work as a team to create a cohesive piece. The focus of their writing was in making strong word choices and showing command of literary devices to engage the reader.*

## Seaside Saviour



I ran down my front steps, towel over my shoulder and the wind whipped my cheek. My bare feet felt the soft grass, noticing the speckled particles of sand residing in it. I slowed to a walk, my breath heaving. A grey cloud covered the sky, promising rain. I smiled, saying to myself that the beach really is beautiful in any weather. I wasn't surprised when I saw the beach blank and empty. But it didn't bother me as I threw down my towel walking towards the dark blue water. A pitiful sound reached my ears and I turned to see a long grey creature stranded on the beach.

I desperately ran back home feeling no oxygen in my lungs. I burst indoors, not even bothering to take off my dusty, sandy shoes.

"Mum, Dad! There's a dolphin stranded on the beach!"

My careless parents don't even respond, just grunt and think I was imagining these things.

"Darling there's never been an animal stranded on the beach before, you're such a good joker."

I was so furious I ran out of our house not even looking back at my mother shouting something at me. If my parents don't believe me no one else probably will. Or maybe one person will.

"Jim the lighthouse keeper!" I frantically thought.

I raced towards the ancient, sun-kissed and rusty lighthouse, sprinting up the sandy steps in record time. The respected man had his eyes closed as the sun shone gently on his long beard. I had no choice but to interrupt him from his peaceful nap.

"Jim! Dolphin... stranded," I forced my words out my dry mouth, still panting like a dog.

**"Dolphin stranded on Whale Beach! Everyone drop what you're doing and come to help!"**

Jim looked in the direction I pointed. He grabbed the old looking speaker, it screeched in pain.

Before there wasn't a single soul on the beach, but now the whole town was here.

A fisherman had brought a knife and a tarp to help, and I was starting to have more hope for the poor little dolphin. Jim cut the net off the dolphin's fin, and I helped him drag the net away from the dolphin. We took the tarp that the fisherman brought and slipped it under the distressed animal and pulled it further into the sea until it was free. The dolphin blew out water from its blowhole, it looked as if crystals flew in the air, as if it was thanking us and then swam back into the deep blue sea.

As the sun sank below the horizon, I watched in triumph as the light bathed the smooth, light grey dolphin's back before it slowly made its descent beneath the calm waves.

"Good job," Jim smiled at me like a beam of sunshine.

A euphoric grin crept up my face. I had saved the day!



## Carly Hall nee Jenkins

Class of 2002

### Feeding Compassion

**C**arly Hall nee Jenkins (Class of 2002), embodies the adage that if you want something done, give it to a busy person.

With boundless energy and infectious enthusiasm, Carly has made a significant impact on her community since her Roseville days.

After graduating, Carly pursued a teaching career. Her journey took a transformative turn when she and her husband spent a decade in Lebanon, building daycare centres for underprivileged mothers. Despite raising their own four children and fostering five more, Carly's commitment to serving those in need remained steadfast.

During the COVID-19 pandemic, Carly and her children volunteered regularly, delivering food to the homeless. It was during this time that Carly and her friend Tash were entrusted by the terminally ill founder of a local charity to continue his legacy. In 2021, they founded 'The Alfresco Community Kitchen' (TACK)

Operating in Martin Place every Tuesday and Saturday fortnight, TACK serves nutritious meals to approximately 200 individuals in need. The initiative relies on volunteers who handle everything from food preparation to distribution.

The support for TACK extends beyond volunteers, with local businesses like Maggios, Chargrilled Charlies, and Prime Butcher generously donating.

Roseville College contributes by preparing emergency meals, donating food platters and creating breakfast packs. These contributions provide a lifeline for rough sleepers, pensioners, university students, job seekers and others facing hardships.

Carly's inclusive approach makes it easy for individuals to join the cause, with a simple online sign-up sheet. Among the regular volunteers is Carly's friend, **Lucinda Morrison nee Amon** (Class of 2002) and her family.

Looking ahead, Carly plans to expand TACK's reach to disadvantaged high schools, beginning with initiatives in areas like Liverpool, in Western Sydney, where students often come to school hungry.

Reflecting on her time at Roseville College, Carly fondly recalls the sense of community and the influence of her teachers, particularly **Mrs Litchfield, Mr Cashman, and Ms Mitchell**. Grateful for the support she received, Carly sees her work with TACK as a tangible expression of Jesus' love, embodying the values cultivated at Roseville.

Carly's journey from Roseville to TACK exemplifies the power of empathy, action and community engagement. Embodying the ethos of service she embraced at Roseville College.



ABOVE AND RIGHT: Carly Hall serving at TACK in Martin Place.

BELOW: Roseville student volunteers cooking for TACK.





Reflecting on her time at Roseville College, Carly fondly recalls the sense of community and the influence of her teachers, particularly Mrs Litchfield, Mr Cashman, and Ms Mitchell.





Year 8 Students making breakfast boxes for disadvantaged students



Year 1 students visiting KOPWA aged care

## Everyday Service Culture

Service Learning is integral to education at Roseville College, rooted in the school's faith, according to Chaplain, **Ms Natasha Clark nee Roberts**, (Class of 2009). Our school Bible reading, 'Colossians 3:12-17', calls us to "above all, put on love".

Roseville collaborates with local community partners, encouraging student engagement with diverse backgrounds to promote real learning and character transformation. Roseville fosters a culture of 'everyday service', teaching students to meet the needs of others locally and globally through student-led initiatives.

Students volunteer outside of school hours and participate in various service activities, visiting the elderly and disabled students, creating breakfast packages, serving meals at Rough Edges, making sanitary packages for Days for Girls, raising funds for Bunda, our sister school in Tanzania and termly fundraisers for the Salvation Army, Anglicare and other organisations.



"I enjoyed helping Chromehurst students and making them smile."

Charlotte Collins, Year 9



"Rough edges was an eye-opening experience that allowed me to meet new people and give back to my community."

Alayna Rajaratnam, Year 11



# Alumni in Service

## The Humble Legacy of Giving Back

Many Roseville alumni actively serve the community by nurturing local sports teams, organising church events, cooking for vulnerable communities (see **Carly Hall** on page 52), leading fundraisers, and providing invaluable assistance for those in need. Their efforts are humbling and highlight the power of kindness and community, which is an integral part of the Roseville ethos. Some Roseville alumni have recently been recognised for their exceptional community contributions; here, we acknowledge a few.



## Bronwyn Brown (Mrs Robards)

1978–1994 Mathematics Teacher, Head of Mathematics 1991–1994

Medal of the Order of Australia (OAM) in the General Division for Service to the Community through music.

With fingers dancing across keys of the piano and organ, Bronwyn orchestrates melodies that resonate far beyond concert halls. From individual students, to choirs, musical competitions and to chapel services, Bronwyn’s musical ability touches so many people. “It keeps the fingers busy and me not retired!” Bronwyn laughs modestly.

*Photo: Alan Lee*



## Julie Harvey nee Manuel

Class of 1972

Nominated for the NSW Volunteer of the Year Award as part of the team of volunteers from Royal North Shore and Ryde hospitals.

Through Julie’s weekly visits to the Child and Adolescent ward, she brings laughter and comfort to patients and weary parents alike. With games, stories, and craft, Julie creates moments of respite. Despite her tireless efforts, Julie remains humble. “I have had many a ‘cup of tea and toast’ with toddlers in the play kitchen.” Julie laughs.

*Photo: Julie with Batman at the RNSH Children’s Ward during Superheroes Week*



## Robyn Twigg nee Lothian

Class of 1973

Medal of the Order of Australia (OAM) in the General Division for Service to the Community through a wide range of organisations.

Robyn has dedicated decades to community service, fundraising for the Cancer Council, supporting domestic violence victims, and mentoring vulnerable individuals. Her volunteer roles include Meals on Wheels, the Handicapped Toy Library, Cub Scouts Australia, and advocacy for marginalised communities. “I always encourage others to volunteer. If one more person does, I’m happy,” says Robyn.

## Mother & Daughter Q&A



Principal **Ms Deb Magill** chatted with Alumni **Michelle Chase nee Dale** Class of 1994 and her daughters **Evie Chase**, Year 9 and **Thea Chase**, Year 7.

Michelle attended Roseville from Kindergarten to Year 12, when she was School Vice-Captain. During her time at Roseville she was involved in Choir, Orchestra, String Orchestra, Madrigals, School Musicals: My Fair Lady, Salad Days, Wizard of Oz (see page 46) and Crusaders. Michelle was Roseville's OGU President in 2004-2006 (in between **Ann MacDonald nee Omant** Class of 1965 and **Joanna Moy** Class of 1978), and this year she is one of our Year 9 Class parents. She is looking forward to the 30 Year Reunion later in the year.

---

### What do you remember most about your first day at Roseville College?

**Thea:** *It was two years ago in Year 5, and it was nothing like I expected; it was so much smaller with only two classes and a lot less girls in each class. I made strong friendships that I still have today.*

**Michelle:** *On my first day at Roseville in Kindergarten the mothers were not allowed to stay and I remember feeling a sense of injustice that one mother had stayed all day! When I got home, I told my mother about it! I found out later that **Mrs Moules** was in fact a teacher, not someone's mother!*

---

### Where was/is your favourite place at Roseville?

**Thea:** *I enjoy the STEM Lab and the Library.*

**Michelle:** *The small pool at the top of Senior Lawn. If I remember right, I think that we used to distinguish between the 'big' pool and the 'small' pool.*

---

### Your favourite teacher and subjects at Roseville?

**Evie:** *My favourite subjects are History and Sociology, and my favourite Teacher is **Dr Luke** (English).*

**Michelle:** ***Mr Thomason**, (Year 6), and **Mr Nichols** (History) were particularly inspiring and engaging teachers. Mr T dressed up as captain of the 'HMS Bringdown' to teach long division; 'How many, Subtract, Bring down' was one of my favourite lessons in my 13 years of schooling!*

---

### What was one of the most fun things you did/do at Roseville?

**Thea:** *Da Vinci Decathlon, Clever Bots, the Musicals and Hockey.*

**Michelle:** *House Music Drama which started when I was in high school. I was part of the team that lobbied for this to be included as part of a student voice.*

“The ‘Give it a Go’ culture has remained at Roseville. You are still encouraged to try everything and be a participant. You are valued.”

**What is the best thing about having your daughters here at Roseville?**

**Michelle:** Lots of things. The shared experiences.

**What is the best thing about your Mum being a Roseville girl?**

**Evie:** It is great that my Mum has been here before me and understands. **Mrs Thill** taught her maths in Year 10 and then had me in Year 8!

**What’s changed most at Roseville?**

**Michelle:** Mostly only the physical environment has changed. The old Hall was dreadful! I remember in Year 8 when we had to sit along the balance beams just to fit inside it!

A less visible but really significant change is the huge variety of extracurricular activities and support available to the girls – the range of music groups, lunchtime clubs covering so many interests and learning support. There are so many opportunities for the girls to find the thing they’re passionate about. The staff team today looks very different too. There is a very rich environment in the school today which has continued to grow over time.

**What’s stayed the same?**

**Michelle:** The ‘Give it a Go’ culture has remained at Roseville. You are still encouraged to try everything and be a participant. You are valued.

## Alumni Save the date

2024

**Saturday 19 October 2024, 3.30–6.00pm**

Alumni Reunion Tour &  
Courtyard Drinks

Class of 2019	5 years
Class of 2014	10 years
Class of 2004	20 years
Class of 1999	25 years
Class of 1994	30 years
Class of 1989	35 years

**Monday 21 October 2024, 12 Noon**

Hinemoan Lunch

Monday October 21

Class of 1984	40 years
Class of 1974	50 years
Class of 1964	60 years
Class of 1954	70 years

And everyone 40 years +

**Saturday 30 November 2024**

ROSA Christmas Lunch

## Do you remember these teachers?



Former Teachers: Mrs Bev Ottery, Mrs Libby Brough, Mrs Sonia Kemp and Mrs Irene Kay

# Roseville Golf Day

Connecting Alumni, Parents and Friends



In 2023, over 50 keen golfers took to Killara Golf Course to challenge themselves and each other in an Irish Teams Stableford competition. Lots of laughter and fun was had by everyone, before, during and after the event.

**Congratulations to the following teams on their success:**

**1st**  
Emma Thurlow (nee Scott) '96  
Karen Scott '99  
Lynette Scott  
Katherine Kelaher  
(Alumni, parent and grandparent)

**2nd**  
Simon Gordon  
Brett Hunter  
Andrew Marchant  
Richard Appleyard  
(Year 11 Dads)

**3rd**  
Walter Tinyow  
Phil Burton  
Nathan Lee  
Duncan Lee  
(Alumni parent and current parents)

**2024 Alumni, Parents & Friends Annual Golf Day – Killara Golf Club**

Thursday, 29 August 2024

Wishing all players a wonderful day!

# Reunions

Whether it's been months or years since you saw each other, these events are the perfect opportunity to celebrate the beauty of friendships that stand the test of time.

Angela Knight  
(nee Macpherson)  
Class of 1976  
Alumni Engagement



*Only five years out, but so excited to be back! These girls were buzzing with excitement to reconnect with each other and share all the amazing things they've been up to since finishing school. It was a huge turnout from the Class of 2018.*

## Class of 2018 5 Year Reunion



See over for more  
Reunion fun

# Reunions cont'd...

*Thank you girls for your amazing attendance and great memories: winning the Senior Archdale Debating Competition, celebrating the school's 90th birthday, outstanding contributions to Performing Arts, Kate Newcombe and Tegan Withall winning the Tildesley Doubles, 7 softball teams finishing 1st in their grades, and Zoe Udewenko's softball successes (Captain of the NSW All Schools team and selection in the U19 Australian team).*

## Class of 1963 60 Year Reunion

*Big shout out of thanks to Carolyn May & Helen Miles (nee Neild) who helped source, identify and assist with all the photos from this era. Archives are so grateful. Always a great attendance from the Class of 1963.*



## Class of 2003 20 Year Reunion

*Memories of leaping over the Gallery balcony onto the high jump mats below came flooding back to this group of girls, not to mention, their sporting endeavours, musical highlights and academic prowess. A bunch of fun, high spirited and hilarious girls, seemed like nothing has changed 20 years later.*

**Class of 1998** 25 Year Reunion



*A small but fabulous group of girls came back to celebrate 50 years since leaving. From left Robyn Twigg (nee Lothian), Vicki McGilvray (nee Wardell), Karen Smyth (nee Lee) and Deidre Kaewplang (nee Stockwell). Although they took a bit of convincing to come, they laughed and chatted like they'd seen each other a week ago!*

**Class of 1973**  
50 Year Reunion

## In memory

*“Lord, Dismiss us with Thy blessing,  
Thanks for mercies past receive;  
Pardon all, their faults confessing;  
Time that’s lost may all retrieve;  
May thy children  
Ne’er again Thy Spirit grieve.”*

An excerpt from the hymn written by John Fawcett sung at St Andrews Anglican Church at the end of every term during Donna’s time at Roseville.

### Vale Donna Gibbs (Mrs Lucy)

English Teacher 1966 – 1990

12 November 1944 – 29 January 2024

**D**onna began teaching at Roseville in 1965 as a young vibrant and highly intelligent English teacher. She produced and directed many Year 11 school plays and even wrote her own play: Jane Fair. (A send up of Jane Eyre). She was an exceptional teacher and was Head of the English Department in the 60s and early 70s and again in 1985-1990. During this time, Donna provided great experiences for her students including theatre productions and guest speakers. She mentored many young teachers, proving to be an exemplary role-model, long before it was fashionable. Donna was wise, loyal, sincere and humble, with a vibrant personality. She was loved and admired by colleagues, students and their families. In return, Donna loved her teaching, her students, her colleagues and the Roseville community. Vale, Donna.

Written by **Angela Knight** (Class of 1976), Alumni Coordinator



#### Our community remembers Donna

“Mrs Lucy cast me in a lead role in the school musical and it changed my life!”

LUCY BLOOM (NEE SCHAFFLER)  
CLASS OF 1991

“Mrs Lucy was an outstanding teacher and a wonderful person who had a profound influence on my life trajectory.”

LISA WOOD  
CLASS OF 1986

“Mrs Lucy was one of those “stand-out” teachers. Her love of literature was so obvious. My clear memory was of her in a fairly “hippy” skirt sitting cross legged on the teacher’s desk, reading passionately, and entrancing us all.”

CATRIONA MEAGHER  
(NEE MARR) CLASS OF 1989

“We all know a teacher that stands out as having the most profound influence – Mrs Lucy is that for me! Our class of 70 at Roseville loved her and are forever grateful for her inspiration and wisdom - and for creating our performance of Ubu!”

CAROLYN NICHOLS (NEE EVISON)  
CLASS OF 1971

“My love of English language and literature was first inspired by Donna Lucy in early high school – 1967–1970; it was impossible to ignore her passion and joy in language and literature and she inspired us to go on the journey with her.”

DARLENE COOK  
CLASS OF 1972



# Thank you

On behalf of the College and the Roseville College Foundation, we thank and acknowledge each donor listed below, and equally those who have requested anonymity.

These generous donations and gifts to the College received in 2023, have enabled us to grow funds to invest in our school's facilities and to support needs-based scholarships that would otherwise not be available at our school. We deeply appreciate each family and individual who has contributed, leaving a lasting legacy for our School.



## Distinguished Honours

John Harbot & Robyn Harbot  
Luis Sarmiento & Joanne Sarmiento

## Graduate

Anthony Benn & Sarah Benn  
Robert Collins & Katie Collins  
Mark Fitzgerald & Anna Fitzgerald  
Margot Gould  
Kathie Hone & Alex Hone  
Daniel Kalandarian & Taline Mikaelian  
The Magill French Family  
Carol Osborne  
Ian F Rodwell  
Kathryn Vanasek & James Vanasek  
Josephine Wu & Vincent Wu  
Kieran Zubrinich & Cassie Zubrinich

## Foundation

Anne Andersen & Grant Andersen  
Adam Barnes & Kim Barnes  
Kevin Barry  
James Becker & Sha Sha Lang-Becker  
Denise Bell & Gordon Bell  
Shaun Berger & Tracey Berger  
Angus Bestic & Jane Highfield  
Vanessa Bi & David Monaghan  
Sarah Black  
Simon Brady & Michela Brady  
Tim Bryan & Victoria Bryan  
Oliver Burn & Rochelle Burn  
Nicholas Burrough & Corinne Burrough  
Helen Byrne & Richard Lawson  
Greg Carroll & Collette Carroll  
Sally Castellas & Damian Castellas  
Camilla Chan & Joseph Chan  
Tony Chan & Jing Ji  
Geoffrey Chang & Teresa Chang  
Michelle Chase & Matthew Chase

Nianqiu Chen & Chen Cheong Man Man  
Chia-ti Cheng & Yiqi Li  
Jason Chow & Shelly Hsu  
Stephen Coman & Karen Ferris  
Shaizeen Contractor & Carl Contractor  
Victoria Cook & Ralph Cook  
Michael Coonan & Gabrielle Whittle  
Anthony Cummins & Jennifer Cummins  
Mark Dacombe & Sarah Dacombe  
Joanne (Qiu Yang) Dai & Richard Bao  
Kylie De Courteney & Jonathan Chapman  
Slawomir Dederko & Zhenhua Dederko  
Kate Derbridge & Andrew Derbidge  
Yin Ding & Cherry (Xiao) Wang  
Ying Ding & Qiqi Ying  
William Dobbie & Caroline Hastrop  
Wendy (Renzhi) Dong  
& Sean (Shangyao) Lin  
Martin Downing & Daniella Zadro  
Jason Edge & Elizabeth Edge  
Petra Erby & Geoff Erby  
Daniel (Qikan) Fang & Wen Gu  
Andrew Firth & Kimberley Firth  
Andrew France & Sally France  
Neil Frantz & Lucinda Frantz  
Irene Gan & Dale Adams  
Adam Gatenby & Liane Moriarty  
Ian Gibson & Myriam Amielh  
Mark Giles & Vivien Yue  
Sean Girvin & Katherine Burchfield  
Richard Gomes & Xi Zhang  
Sally Gorla & Tony Maguire  
Sally Grainger & Jefferson Grainger  
Andrew Griffiths & Deirdre Griffiths  
Kai Guo & Bo Xia  
James Hall & Sarah Hall  
David Hancock & Kate Hancock

Long Hao & Yuliana Young  
Andrew Harding & Nathalie Harding  
Fiona Hayes & Matthew Hayes  
Shiyun He & Xiaomin Huang  
Kurt Hegvold & Samantha Hegvold  
Lenore Hogan & Michael Hogan  
Tommy (Wen Tao) Huang  
& Sarah (Hui) Wu  
David (Jaiyuan) Huang  
& Condy (Lina) Huang  
Xiaomin Huang & Shiyun He  
To Hung & Yiling Jin  
Shane Hurst & Marissa Hurst  
Helen Irwin-Childs  
Peter Jansen & Teira Jansen  
Nan Jiang & Amy Sheng  
Hao Jiang & Zhi Wang  
Yvonne (Jaimeng) Jin  
& Wilson (Ning) Wang  
Tony Jurlina & Angela Fox  
Wayne Lee & Min Keyong Kim  
Elaine Lee & Matthew Lee  
Angela (Xiaoxin) Li & Ming Zhang  
Xuezhi Li & Cheng Li  
Zizhen Liao & Tinghui Xie  
Simon Liebke & Elissa Liebke  
Warren (Zhengwei) Liu  
& Angela (Rong) Wu  
Martin Liu & Stephanie Sum  
Eva (Xu) Lu & Yu Su  
Michelle (Juan) Ma  
& Jason (Desheng) Wang  
Kris Ma & Angela Au  
Xiaohua Ma & Fang Xu  
Andrew Maclachlan & Karina Maclachlan  
Venkatesh Mahalingam  
& Priya Ranjani Annadurai  
Jo Mahendran & Devnath Mahendran

# Thank you cont'd...

## Foundation (cont'd)

Andrew Marchant & Belinda Marchant  
 Glenn Maris & Suzanne Maris  
 Mark McCall & Shantelle McCall  
 David McCourt  
 Michelle McGrath & Tony McGrath  
 Elizabeth McIntyre & Scott McIntyre  
 Jamie McKay & Joanne McKay  
 Paul McKaysmith & Shelley McKaysmith  
 Robert Scott Mckinnel & Jane Senior  
 Peter Meany & Michelle Meany  
 Jen Meek & Michael Meek  
 Jim (Wei Hong) Meng  
 & Ivy (Xue jun) Liang  
 Sean Miller & Kristen Miller  
 Terrence Moloney & Susan Lupack  
 Kate Ng & Damien Ng  
 Jack (Yu Fan) Ng & Yang Liu  
 Tim Nunan & Primalka Nunan  
 Christine O'Brien  
 Brian O'Gallagher  
 Roslyn Paterson & Brent Paterson  
 Julianne Peterson & Timothy Peterson  
 Anthony Petesic & Josephine Petesic  
 Hermanus Potgieter  
 & Charlene Potgieter  
 Robert Priest & Vanessa Priest  
 Shumin Qiu & Ming Li  
 Sue Robinson & John Wilson  
 James Rutledge & Lara Rutledge  
 Rebecca Saunders & Nick Saunders  
 Peter Schofield & Lesley Tapsall  
 Amanda Sestak & Stephen Sestak  
 Elliott Shadforth & Melissa Shadforth  
 Greg Sherington  
 & Philippa Sherington  
 Vanessa Shuetrim & David Shuetrim  
 Andrew Sinclair & Kirsten Sinclair  
 Michael Small & Sally Small

Joanne Smith & Tony Smith  
 Christopher Smith & Amanda Smith  
 Timothy St Quintin & Sarah St Quintin  
 Andrew Stone & Kristen Stone  
 Alex Stuart & Renata Mazzone  
 Eric Sun & Denise Ye  
 Eric Thomson & Kim Thomson  
 Jemma Upson & Stewart Upson  
 Joanna Vandeleur & Paul Vandeleur  
 Robert Vuong & Anna To  
 Johnny (Jin) Wang & Lucia (Lu) Lai  
 Karen Wang & Joe Wong  
 Lijun Wang  
 & Bianca (Ying) Song  
 Patricia Wang  
 Ning Wang & Jiameng Jin  
 Chunhua Wang & Tingting Zhang  
 Desheng Wang & Juan Ma  
 Mark Weeden & Tracey McNaughton  
 Malcolm Weir & Janet Weir  
 Jackie Wenck & Adrian Wenck  
 Robyn White & Andrew White  
 David White  
 & Kirralee Baker  
 Anne White  
 Charlotte Wilsey & Ross Smith  
 Michael Wiseman & Sally Wiseman  
 Sharon Woo & Jason Teh  
 Gordon (Chien-Hui) Wu & Lisa Mossop  
 Monica (Tingting) Wu  
 & Michael (JunJie) Yu  
 Sydney (Yekun) Xing & John (Lan) Wu  
 Ming Xu & Xuemei Yang  
 Vivian (Yue) Yan & Huibo Chen  
 Jiaying Yan & Chen Chen  
 Shuang Yan & Shuxin Liu  
 Weibin Yang & Winnie (Yingyi) Lu  
 Joy Yip & Thomas Gan  
 To Yip & Hung-Ying Chen

Yuliana Young & Leo (Long) Hao  
 Jessie (Quan) Yu & Kevin (Keyu) Yan  
 Alan Zhang & Fiona Wu  
 Vanessa (Congli) Zhang & Titan  
 (Rongtun) Xiao  
 Charles (Siwen) Zhang  
 & Michelle (Yan) Zhao  
 Iris (Xiao) Zhang & Jack (Lin) Zhang  
 Zewei Zhang & Wenjia Zhou  
 Yuegang Zhang & Qiong Lu  
 Fenghin Zhu & Alex Zuo  
 Anonymous Donation – Grateful  
 parents to three Alumni

**Roseville College**  
27 Bancroft Avenue  
Roseville NSW 2069  
+61 2 9884 1100  
rosevillecollege.com

**An Anglican School for girls since 1908.**

To receive current updates, please  
follow Roseville College on:

[facebook.com/RosevilleCollege](https://facebook.com/RosevilleCollege)  
[instagram.com/rosevillecollege](https://instagram.com/rosevillecollege)  
[facebook.com/RosevilleCollegeAlumni](https://facebook.com/RosevilleCollegeAlumni)

We would love to hear from Alumni. If you have news  
to share or would like to be involved in our alumni  
or careers events, please contact Angela Knight at  
[alumni@roseville.nsw.edu.au](mailto:alumni@roseville.nsw.edu.au)



RECYCLED  
CONTENT  
30%



ELEMENTAL  
CHLORINE  
FREE



FOREST  
MANAGEMENT

The Rose is printed on 30% recycled content. Made from elemental chlorine free bleached pulp (PEFC™ certified sourced and sustainably managed) and manufactured by an ISO 14001 certified mill.

Find out more  
[rosevillecollege.com](http://rosevillecollege.com)

